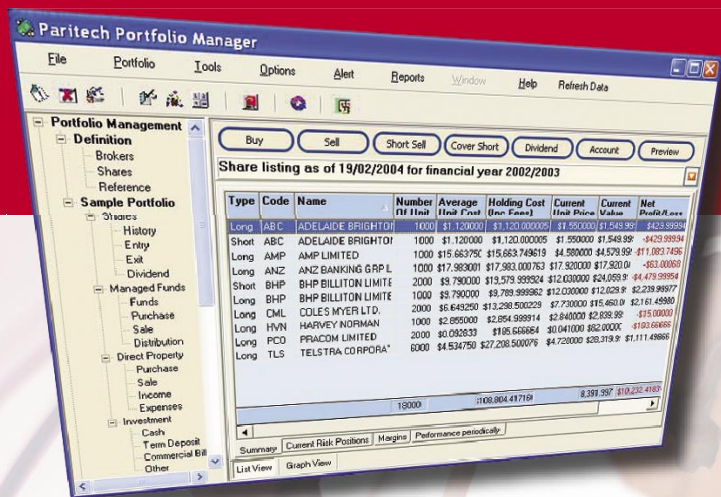


SOFTWARE

Portfolio Manager & Analyser Manage & grow your investments



Maximise your gains and minimise the risk

Portfolio Analyser

Paritech's Portfolio Analyser is a powerful, yet easy to use application that allows you to analyse securities & provides you with critical portfolio information such as:

Charted historical portfolio performance – View portfolio trends and 'what if' scenarios

Diversification – Analyse industries and their sub industries to further improve your asset allocation

Portfolio weighted average price earnings – Compare your portfolio to individual stocks or the market

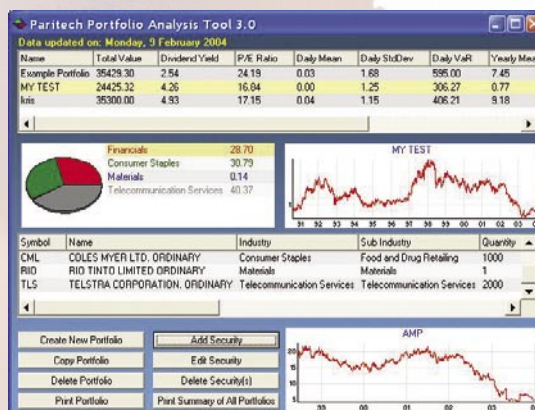
Daily and yearly total portfolio value at risk – Identify high-risk stocks and manage your portfolio accordingly

Standard deviation – Represents the risk or volatility of the portfolio

Mean – Measure returns against each stock and your total portfolio

Sharpe ratio – Represents the Risk Return Ratio

Paritech's Portfolio Manager and Portfolio Analyser provides you with the tools to determine and customise your portfolio to realise your investment goals



Powerful, integrated tools designed to help you take control of your investments

Portfolio Manager

Paritech's Portfolio Manager provides you with a comprehensive market management and analysis tool to help you maximise your gains and more importantly minimise your risk.

Enhance the management of your investments using Paritech's Portfolio Manager that assists you to control your equities, property, funds, other income and savings.

The Portfolio Management system allows you to quickly view all of the stocks in your portfolio. Automatic reports are compiled and include:

- Gain / Loss Reports
- Transaction Reports
- Brokerage Reports
- Holdings Reports
- Detailed Dividend Reports

Other important features integrated into Paritech's Portfolio Manager are:

- Stock Alerts
- Margin lending calculations
- Short Selling
- Share Split Adjustment
- Dividend information

Australia

Level 8, 369 Royal Parade
Parkville VIC 3052 Australia
Phone: 1300 652 511 (toll free)
+61 3 8341 5600
Fax: +61 3 9348 2790
Email: info@paritech.com.au
Web: www.paritech.com.au

USA

425 Market Street
Suite 2200
San Francisco, CA 94105 USA
Phone: +1 801 475 5050
Fax: +1 415 348 9713
Email: info@paritech.com
Web: www.paritech.com

Singapore

Level 31
6 Battery Road
Singapore 049909
Phone: +65 6322 8566
Email: info@paritech.com.sg
Web: www.paritech.com.sg

UK

2 King Street
Sudbury
Suffolk, CO10 2EB, UK
Phone: +44 (0) 1787 888 080
Fax: +44 (0) 1787 319 975
Email: info@paritech.co.uk
Web: www.paritech.co.uk